

SERIES 150 SH
MFG. MODEL 511
BRICKMOULD NEW CONSTRUCTION SINGLE HUNG WINDOW

APPLICATION:

Residential New Construction

MATERIALS:

Frame and sash are maintenance free, color stabilized solid vinyl (PVC).

Lift rail, lock rail and the meeting rail contain aluminum rebar for added strength. Windows more than 60" in height also have rebar in the stiles.

The screen is comprised of rolled form aluminum frame and fiberglass mesh.

The intercept glass spacer system is comprised of Hot Melt Butyl and Hot Melt Desiccated Matrix.

Glazing method:
Glazing tape

FEATURES:

Cam Locks are standard. Double Locks are featured on all windows measuring more than 27 1/4" in width.

Block & Tackle balances provide quiet, easy operation.

Integrated tilt latches permit easy tilt in and cleaning.

Sloped sill enhances water run off.

Integrated J-channel assists in the installation of vinyl siding.

Pre Punched nailing fin allows for faster installation.

Sashes are available in equal lite, Cottage and Oriel styles.

DIMENSIONS:

Vinyl wall thickness:
0.065" (1.65MM)

Glass thickness:
0.750" (19.05MM)

Jamb thickness:
3.277" (83.24MM)

Frame width:
2.412" (61.26MM)

Nailing fin length
1.365" (34.67MM)

Nail fin setback
1.537" (39.04MM)

"J" Channel depth
.625" (15.88MM)

Egress width =
window width - 4 13/16"

Egress height (with sash) =
(window height/2) - 3 9/16"

Egress height (without sash) =
(window height/2) - 3 1/8"

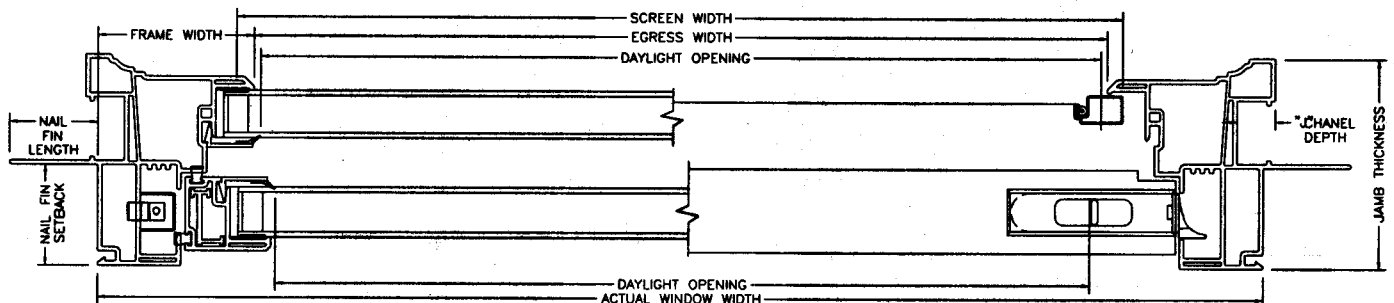
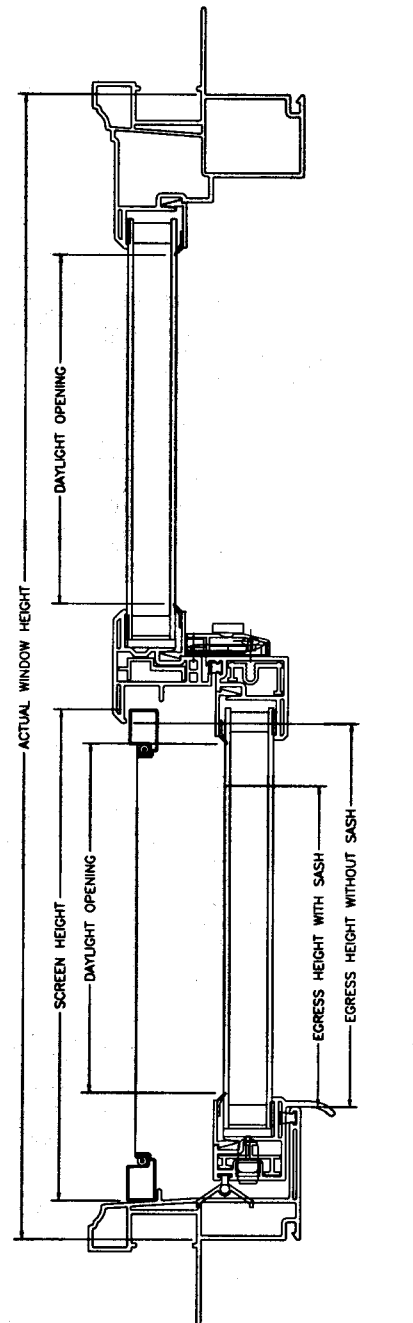
Top sash daylight opening width
= window width - 5 1/8"

Bottom sash daylight opening width
= window width - 5 1/2"

Daylight opening height =
(window height/2) - 3 7/16"

Screen width =
window width - 4 3/8"

Screen height =
(window height/2) - 1 1/4"



OPTIONS:

GLASS:

Clear
Solarban
Double strength
Azurlite Tint
Obscure
Bronze
Sun Clean

GAS:

Argon

Special Shapes:

Octagonals
Full Circles

GRIDS:

3/4" Colonial Grid
1" Contoured Grid

COLOR:

White
Almond

MULLED UNITS:

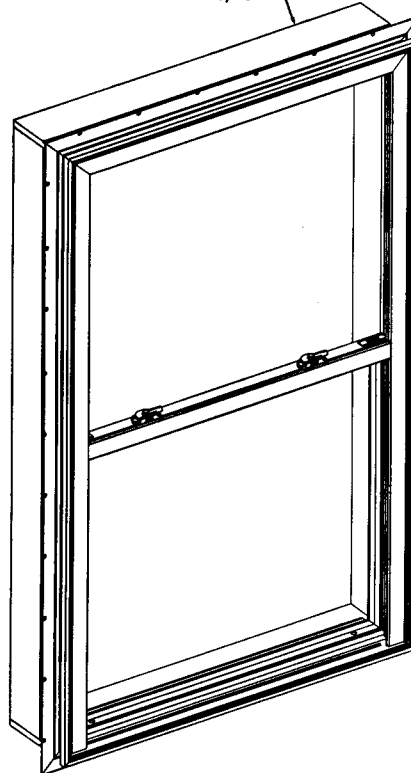
Factory mulling of twins, triples and special shapes provides easier installation without extra labor or material costs.

Reinforcement is available for added strength in factory mulled units.

WOOD-JAMB EXTENSION:

The interior wood-jamb extension is available in 4 9/16" pre primed pine or 6 9/16" clear pine for your convenience and easier installation.

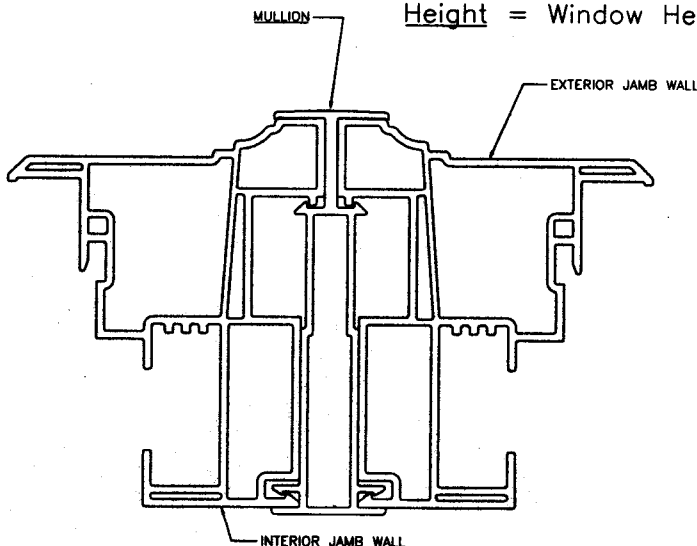
WOOD EXTENSION 3" x 5/8"
OVERALL WALL THICKNESS = 4 9/16"



RECOMMENDED ROUGH OPENING:

Width = Window Width + 1/2"

Height = Window Height + 1/2"



TESTING RESULTS:

THERMAL RESULTS:

Not available at this time.

STRUCTURAL RESULTS:

Not available at this time.

FUSION WELDING:

Frame and Sash are fusion welded to protect against air and water infiltration. Fusion adds strength and squareness to the window.

SIZES:

Standard and Custom sizes are available.

WARRANTY:

Warranty is provided.

300 WELCOME CENTER BLVD.
P.O. BOX 1869
WELCOME, N.C. 27374-1869
FAX 1-800-522-3981
S-150-SH-511

10/23/2003
SUPERSEDES
10/16/2003

